

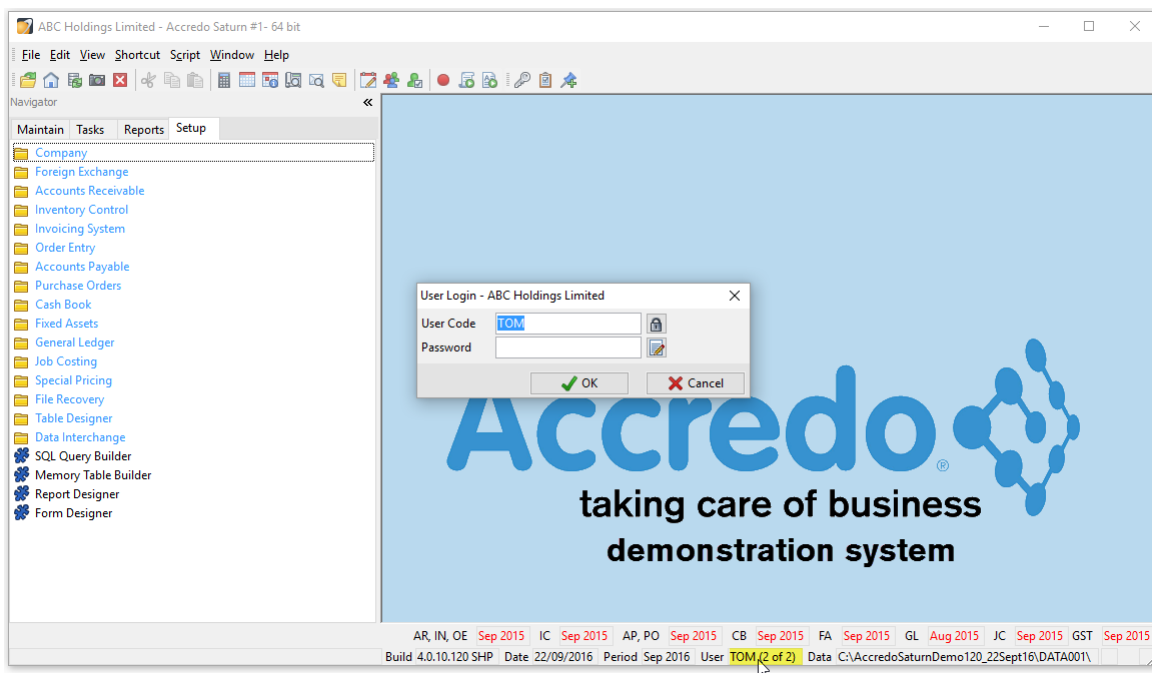
Tips & Tricks

Switching Users

Did you know you don't have to close the Company and re-open it to switch Users?

You can simply click on the User display field on the Status Bar to bring up the User Login screen, ready for the other User to Log in.

Note: Field visibility on open windows will not be updated until the window is reopened.



It is a good idea to have Force Login Default selected in: Navigator > Setup > Company > Configuration > Settings. This way, if someone goes to switch Users, they cannot press escape at the User Login screen or close the window to go back into the company. A User Code and Password must be entered. Pressing escape or closing the window will just close the company.