

Tips & Tricks

Log in to IRD / ATO from the GST / BAS Return Form

You can add a button to your GST Return form (NZ) or BAS Return form (Aus) to open the IRD / ATO website, so you can log in and lodge a Return.

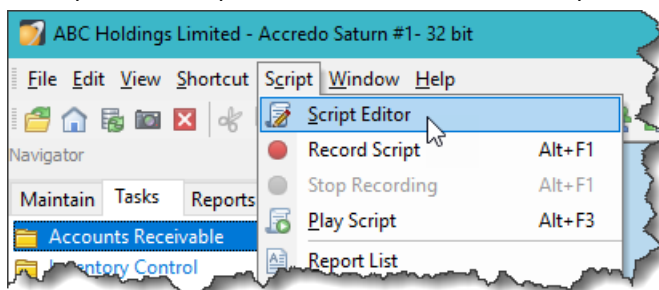
The below example steps through how to do this from the GST Return form (NZ). To do this from the BAS Return (Aus), replace the URL in the script as explained below.


1 For the New Zealand GST Return, select the code below and press **Ctrl+C**. Alternatively, you can download the **MyIRLogin.pfs** script from <ftp://ftp.accredo.co.nz/Public/Downloads/Scripts> and go to step 5.

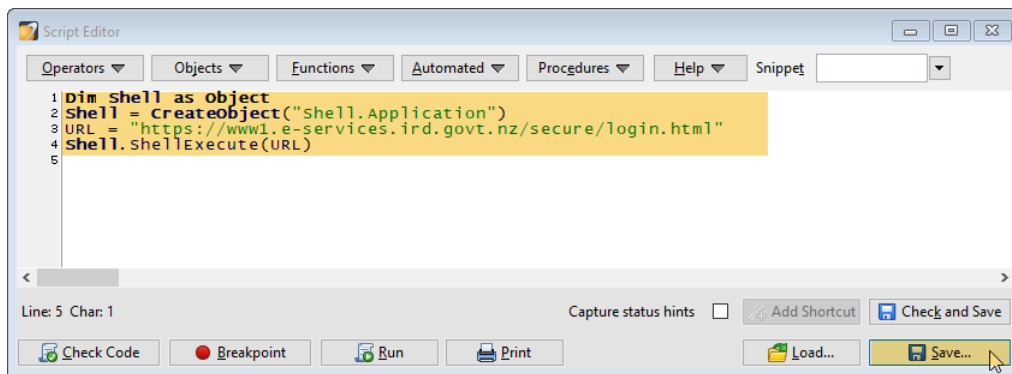
```
Dim Shell as Object
Shell = CreateObject("Shell.Application")
URL = "https://www1.e-services.ird.govt.nz/secure/login.html"
Shell.ShellExecute(URL)
```

For the Australian BAS return, replace the URL with the relevant BAS form URL, such as "https://bp.ato.gov.au", and copy the code.

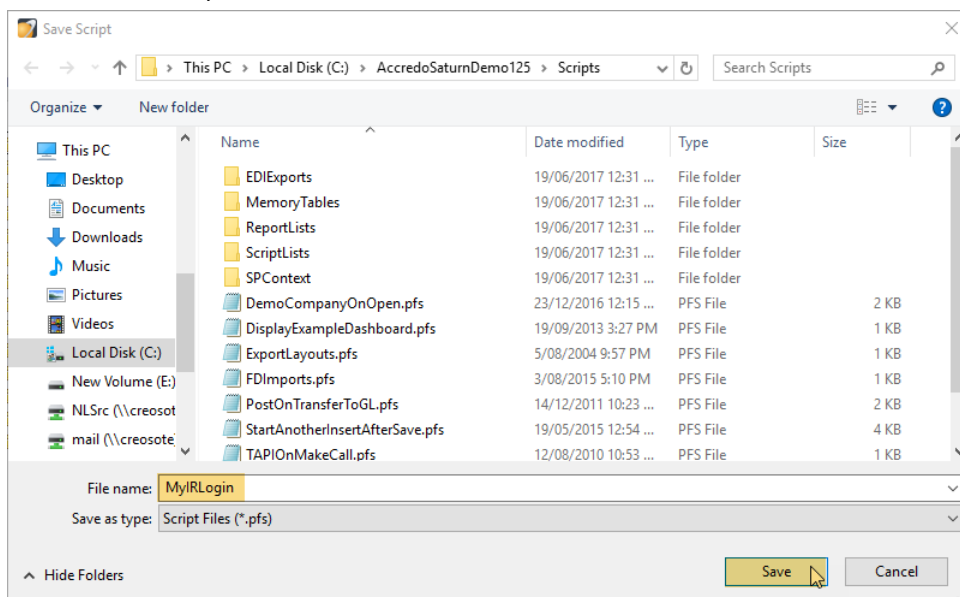
2 Open the Script Editor, at Main Menu > Script > Script Editor.



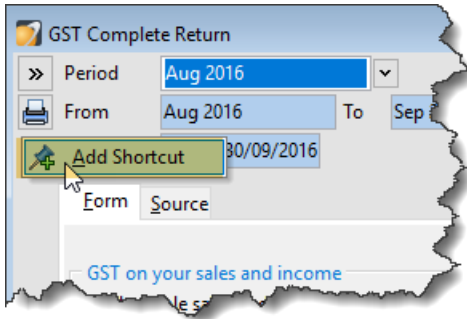
3 Paste the code by pressing **Ctrl+V**. Click  **Save (Ctrl+S)**.



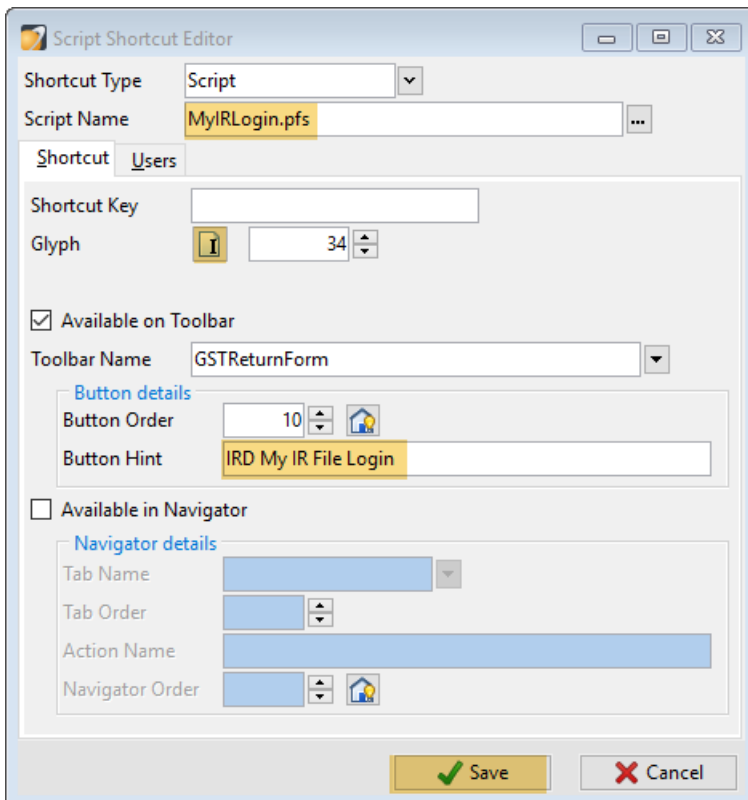
4 Save the script as **MYIRLOGIN** then click **Save**.



- 5 Open the GST Return Form from Tasks > Goods and Services Tax > Complete Return. (Press Ok if an End of Periods warning is displayed.)
- 6 Right-click on the Vertical Toolbar and then click **Add Shortcut**.

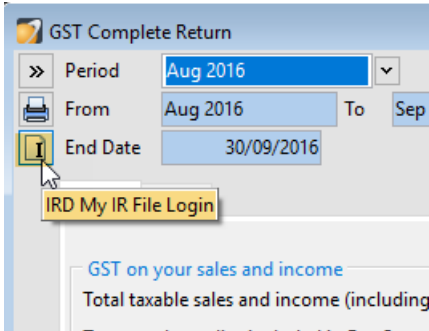


- 7 The Script Shortcut Editor window opens. In the **Script Name** field press F2 then double-click **MyIRLogin.pfs** so that it appears in the field.
- 8 Click the **Glyph** button to choose a Glyph, then enter a **Button Hint**.

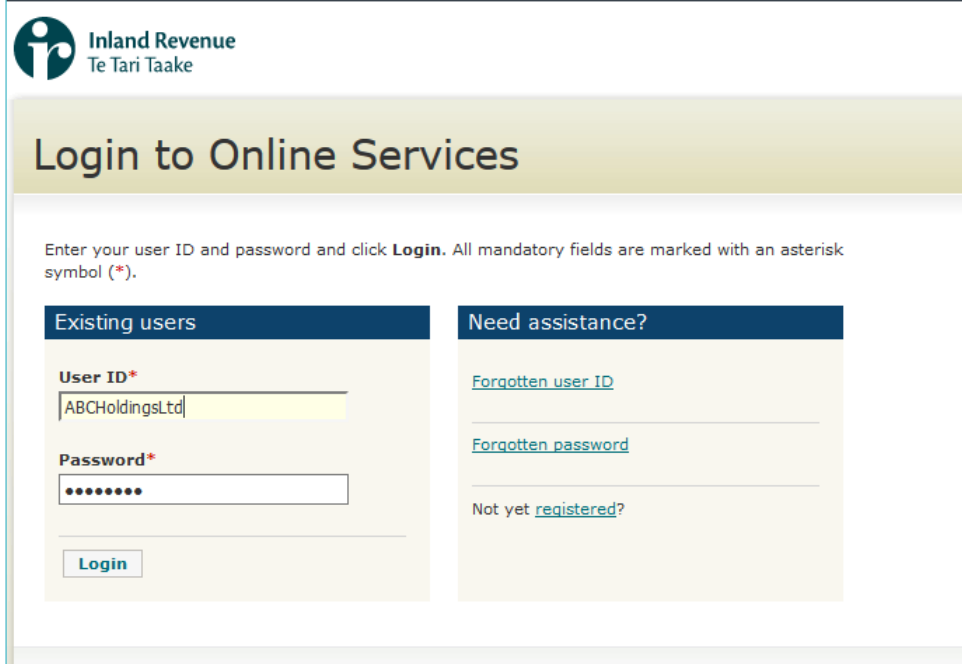


Click  **Save** (F9).

9 Your GST Return Form now contains a button to access the IRD IR File login website.



10 Click on the Button to access the Web Page.



You can also add a button to run GST reports from your GST Return Form. See the Tips and Tricks topic **Print GST Reports from the GST Return Form**.