

Tips & Tricks

Link to IRD Depreciation Rate Finder from Fixed Assets

We have written a script to launch the IRD Depreciation Rate Finder. You may find it useful to hook this up to a button on your FA Asset Maintenance window and your FA Opening Values window.

Follow the steps below to set this up.

Create the Script

1 To create the Script, select the code below and press **Ctrl+C** (or download the **DepreciationRateFinder.pfs** script from <ftp://ftp.accredo.co.nz/Public/Downloads/Scripts> and save to your Scripts Folder and go to step 5).

```
Dim Shell as Object
```

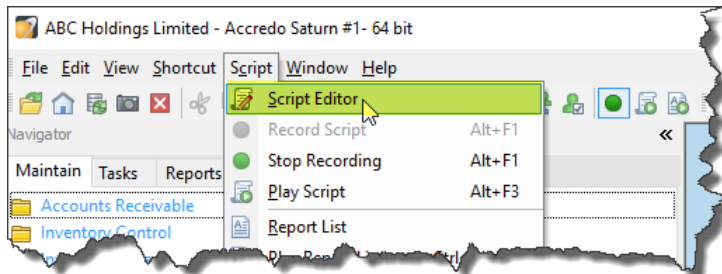
```
Shell = CreateObject("Shell.Application")
```


```
URL =
```

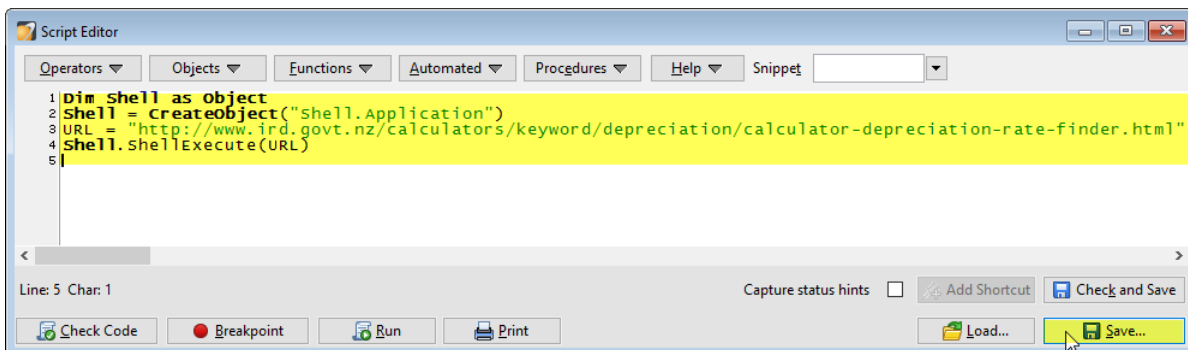
```
"http://www.ird.govt.nz/calculators/keyword/depreciation/calculator-depreciation-rate-finder.html"
```

```
Shell.ShellExecute(URL)
```

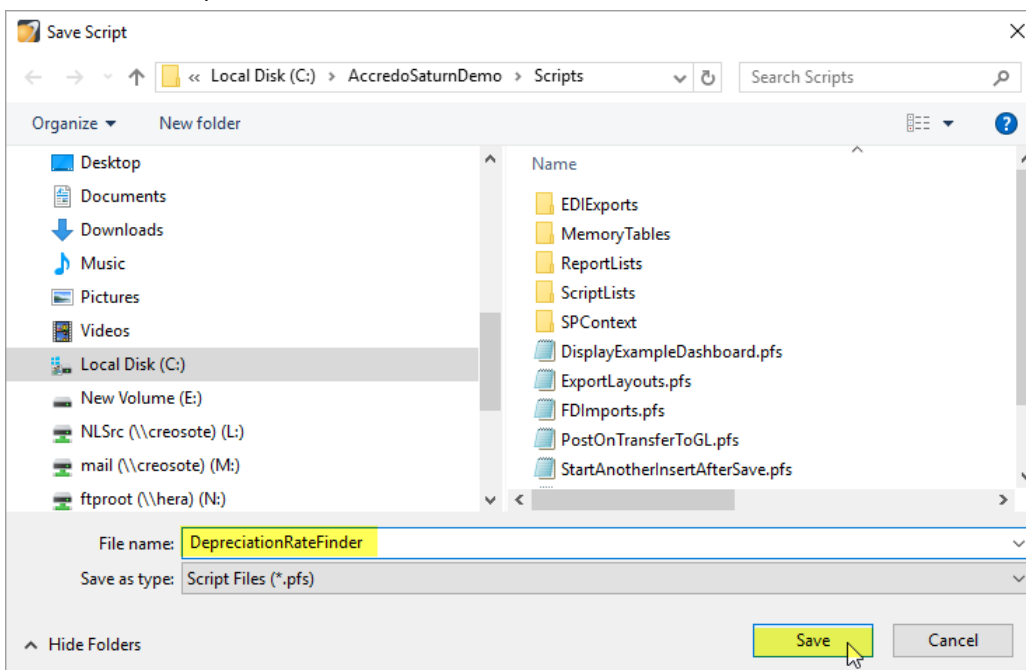
2 Open the Script Editor. Go to **Accredo > Script > Script Editor**.




3 Paste in the code by pressing `Ctrl+V`. Then click  **Save** (`Ctrl+S`).

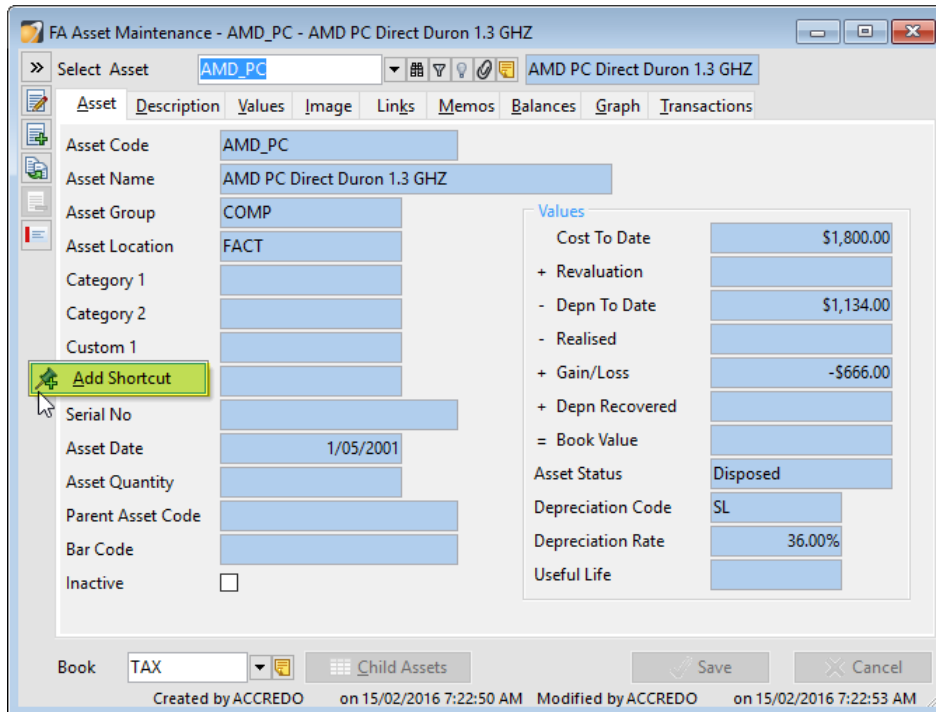


4 Save the script as **DepreciationRateFinder**, then click **Save**.



5 Open the FA Asset Maintenance Window. Go to Navigator > Maintain > Fixed Assets > Assets.

6 Right-click on the Vertical Toolbar then click  **Add Shortcut**.



FA Asset Maintenance - AMD_PC - AMD PC Direct Duron 1.3 GHZ

Select Asset: AMD_PC | AMD PC Direct Duron 1.3 GHZ


Asset Code: AMD_PC
Asset Name: AMD PC Direct Duron 1.3 GHZ
Asset Group: COMP
Asset Location: FACT
Category 1:
Category 2:
Custom 1:
Serial No:
Asset Date: 1/05/2001
Asset Quantity:
Parent Asset Code:
Bar Code:
Inactive:

Values

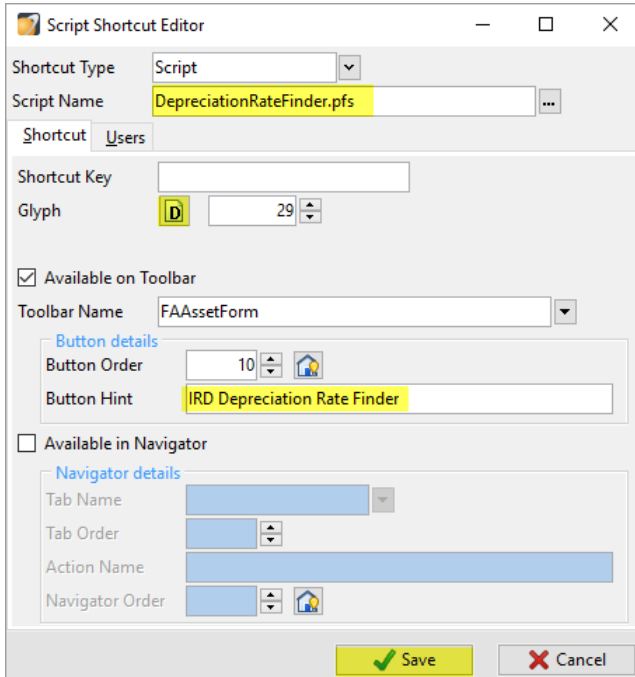
Cost To Date	\$1,800.00
+ Revaluation	
- Depn To Date	\$1,134.00
- Realised	
+ Gain/Loss	-\$666.00
+ Depn Recovered	
= Book Value	
Asset Status	Disposed
Depreciation Code	SL
Depreciation Rate	36.00%
Useful Life	

Book: TAX | Child Assets | Save | Cancel

Created by ACCREDO on 15/02/2016 7:22:50 AM Modified by ACCREDO on 15/02/2016 7:22:53 AM

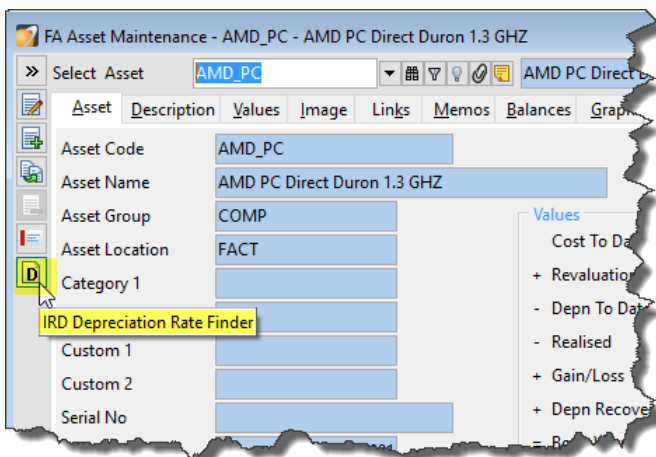
7 The Script Shortcut Editor window opens. In the SCRIPT NAME field, click  **Select File (F2)** and double click the **DepreciationRateFinder.pfs** file so it appears in the field.

8 Click the **Glyph** button to choose a Glyph, and enter a BUTTON HINT.



Click  **Save (F9)**.

9 Your FA Asset Maintenance Window now contains the button to access the IRD Deprecation Rates



10 Click on the Button to access the Web Page.

The screenshot shows the Inland Revenue website's 'Work it out' section. At the top left is the Inland Revenue logo (Te Tari Taake). To the right is a search bar and a navigation menu with links for Home, Individuals & families, Businesses & employers, Non-profit organisations, and Tax agents. Below the navigation is a breadcrumb trail: 'You are here: Home > Work it out > by keyword > Depreciation'. The main heading is 'Work it out' with the Māori name 'Ngā tāaitai' below it. There are two buttons: 'by keyword' (selected) and 'by tool name'. The tool title is 'Depreciation rate finder'. A 'Start >' button is located to the right of the tool title, with the text 'Links open in a new window' below it. The main content area is a light brown box containing the following text: 'About this calculator', 'This calculator will find the depreciation rate(s) for all depreciable assets acquired after 1 April 1993.', 'Use of this tool does not result in data being submitted to us.', and 'When to use this calculator'. On the right side of the page, there is a vertical sidebar with 'myIR Secure Online Services' and a yellow 'Login' button. Below this are links for 'Forgot login | Register', 'myIR services', and 'Mobile apps'. Further down are 'Make a payment', 'International', 'Public consultation', 'Technical tax area', 'Demos and videos', and 'Tax seminars'. At the bottom of the sidebar are 'Get it done online All online services >' and 'Work it out'.

11 Open FA Opening Asset Values Window. Go to Navigator > Tasks > Fixed Assets > Enter Opening Values. Add the button to the FA Opening Asset Values window as explained above.