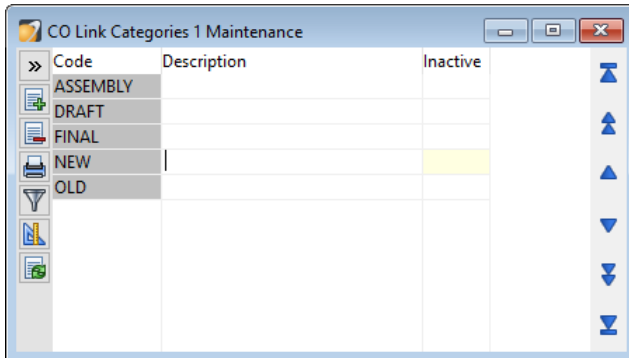


Tips & Tricks

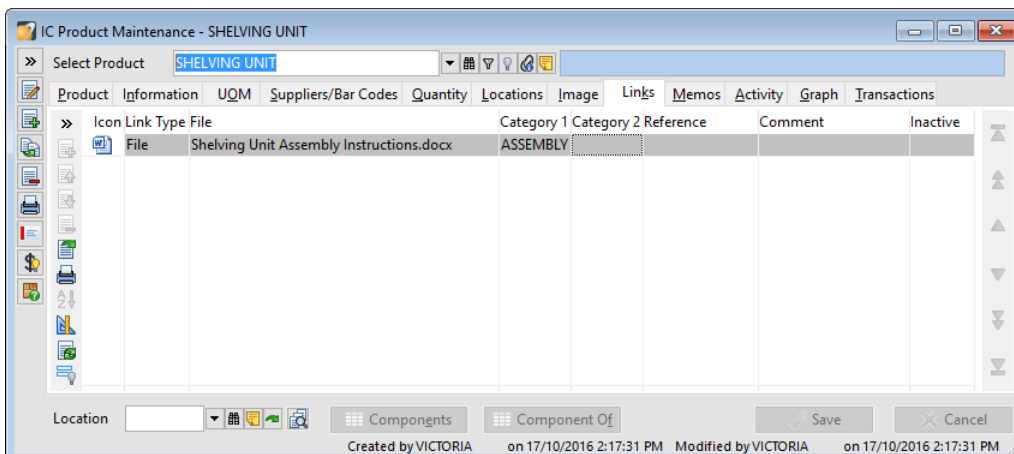
Leveraging Your Links

In this example we will provide code to print out Assembly instructions when a Shelving Unit is sold for our demonstration company ABC Holdings Ltd. You can adapt this to suit your business. To do this, we have setup a LINKS CATEGORY CODE called **ASSEMBLY** under Navigator > Maintain > Company > Links Categories 1.



We have saved Word Documents containing Assembly Instructions for the furniture we sell to the Accredo\Links folder.

For each Product that has Assembly Instructions, go to the Links tab and specify the File Location for the Assembly Instructions Document and select CATEGORY 1 **ASSEMBLY**. Go to Navigator > Maintain > Inventory Control > Products > Links tab



We have a script activated when an Invoices is printed, that tells Accredo to look at the Products on the Invoice, and if any have a LINKS CATEGORY1 CODE of **ASSEMBLY**, then print out the associated file. So in the example above if we were Invoicing for a **SHELVING UNIT**, the Shelving Unit Assembly Instructions would automatically print after the Invoice.

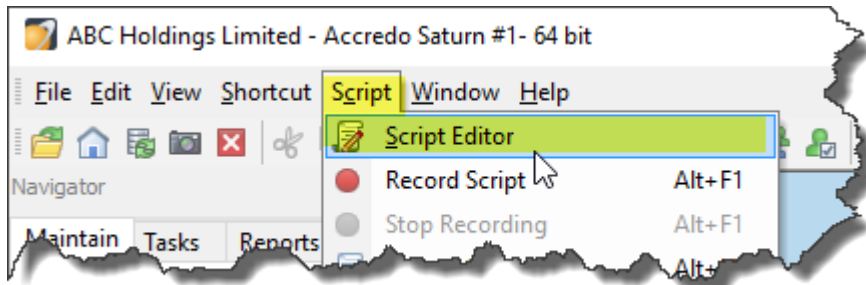
In our example, we have used the code below which you can select and then copy, or you can download the script from

<ftp://ftp.accredo.co.nz/Puboic/Downloads/Scripts/INPrintAssemblyInstructions.pfs>.

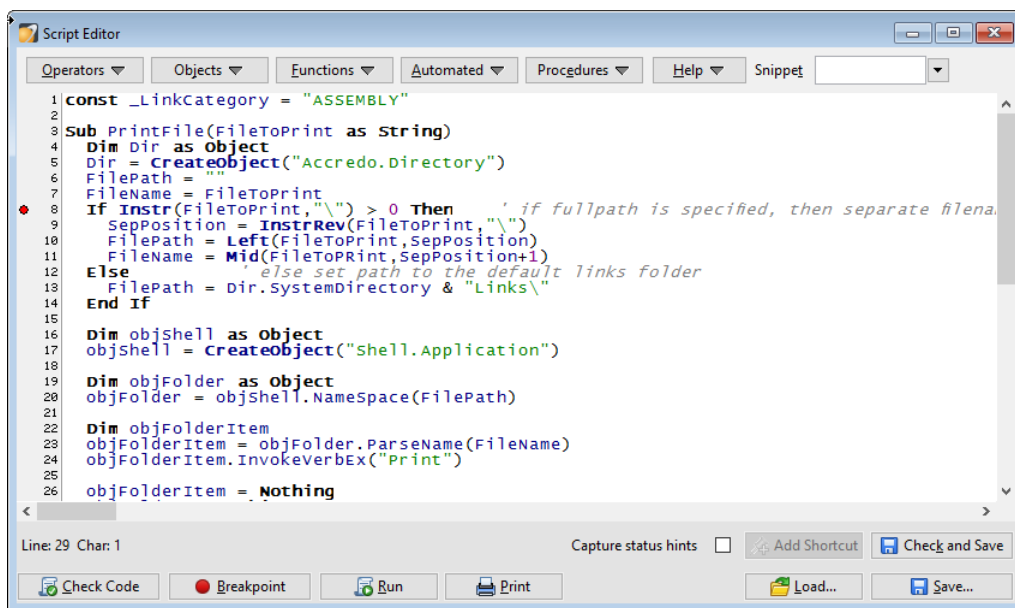
```
const _LinkCategory = "ASSEMBLY"
Sub PrintFile(FileToPrint as String)
  Dim Dir as Object
  Dir = CreateObject("Accredo.Directory")
  FilePath = ""
  FileName = FileToPrint
  If Instr(FileToPrint,"\") > 0 Then ' if fullpath is specified, then separate filename from path
    SepPosition = InstrRev(FileToPrint,"\")
    FilePath = Left(FileToPrint,SepPosition)
    FileName = Mid(FileToPrint,SepPosition+1)
  Else ' else set path to the default links folder
    FilePath = Dir.SystemDirectory & "Links\"
  End If
  Dim objShell as Object
  objShell = CreateObject("shell.Application")
  Dim objFolder as Object
  objFolder = objShell.Namespace(FilePath)
  Dim objFolderItem as Object
  objFolderItem = objFolder.ParseName(FileName)
  objFolderItem.InvokeVerbEX("Print")
  objFolderItem = Nothing
  objFolder = Nothing
  objShell = Nothing
End Sub

Dim INForm as Object
INForm = GetTriggerObject
Dim INPrint as Object
INPrint= GetActiveObject
Dim ICLink as Object
ICLink = OpenTable("ICLINK")
ICLink.IndexName = "ActiveCodeLine"
Dim Line as Object
Line = INForm.Line
Line.First
Do Until Line.EOF ' run down the lines
  If Line.ProductCode <> "" Then ' if product is specified
    ICLink.SetRange(False,Line.ProductCode) ' range on active links for this product
    ICLink.First
    Do Until ICLink.EOF
      If ICLink.Category1 = _LinkCategory Then ' if links category1 = specified category
        If ICLink.LinkType = "F" Then PrintFile(ICLink.FilePath) ' if file link, then print
      End If
      ICLink.Next
    Loop
  End If
  Line.Next
Loop
```

Open the Script Editor, from Main Menu > View > Script > Script Editor.

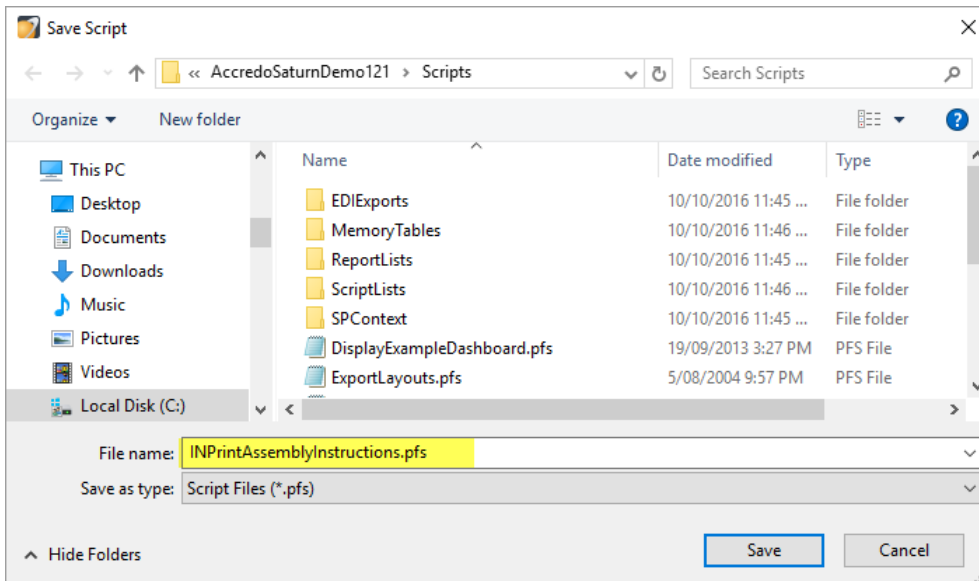


Paste in the above code.




```
1 const _LinkCategory = "ASSEMBLY"
2
3 Sub PrintFile(FileToPrint as String)
4     Dim Dir as Object
5     Dir = CreateObject("Accredo.Directory")
6     FilePath = ""
7     FileName = FileToPrint
8     If Instr(FileToPrint, "\") > 0 Then ' if fullpath is specified, then separate filena.
9         SepPosition = InstrRev(FileToPrint, "\")
10        FilePath = Left(FileToPrint, SepPosition)
11        FileName = Mid(FileToPrint, SepPosition+1)
12    Else ' else set path to the default links folder
13        FilePath = Dir.SystemDirectory & "Links\"
14    End If
15
16    Dim objShell as Object
17    objShell = CreateObject("shell.Application")
18
19    Dim objFolder as Object
20    objFolder = objShell.Namespace(FilePath)
21
22    Dim objFolderItem
23    objFolderItem = objFolder.ParseName(FileName)
24    objFolderItem.InvokeVerbEx("Print")
25
26    objFolderItem = Nothing
```

Save the script to the Accredo\Scripts directory and give the script a meaningful name. We have called it INPrintAssemblyInstructions.

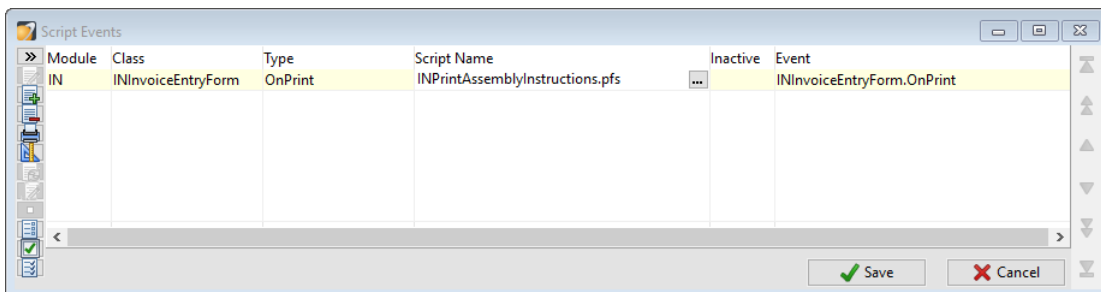


Link the script to the Script Event for INInvoiceEntryForm.OnPrint, so that it runs automatically when an Invoice is printed. If you already have a script linked to this event, contact your QSP for assistance.

Go to Main Menu > Script > Script Events.

Click  **Edit** (F11). Select:

- MODULE - **IN**
- CLASS - **InInvoiceEntryForm**
- TYPE - **OnPrint**
- SCRIPT NAME - **INPrintAssemblyInstructions.pfs**



Click  **Save** (F9).

In our example above, whenever we print out an invoice with a product with ASSEMBLY in the Links Category1 field, the associated Assembly instructions will print after the Invoice.

You can adapt this Script to print any Document associated with a Product. It could be a manual, a certificate or a warranty, for example.

Below is a summary of the steps required:

- 1** Set up your LINKS CATEGORY 1 CODE in Navigator > Maintain > Company > Links Category 1.
- 2** Copy the Script code to the Script Editor then change **ASSEMBLY** in the first line of code, to your LINKS CATEGORY 1 CODE in Main Menu > Script > Script Editor, then Save.
- 3** Open your Product - Links tab, browse to your documents, then set the LINKS CATEGORY 1 for each product applicable in Navigator > Maintain > Inventory Control > Products > Links tab.
- 4** Set up the script event in Main Menu > Script > Script Events.