

Tips & Tricks

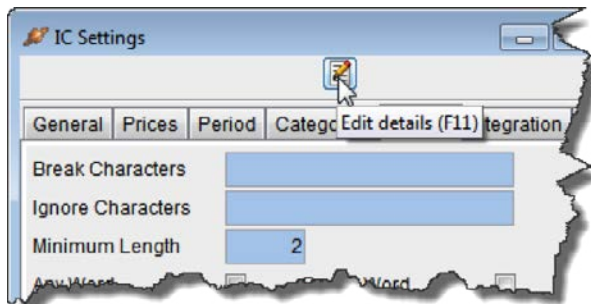
Finding Products by Bin Location – Saturn only

Saturn users can now find which Products belong to which Bin Location by using the Word Lookup.

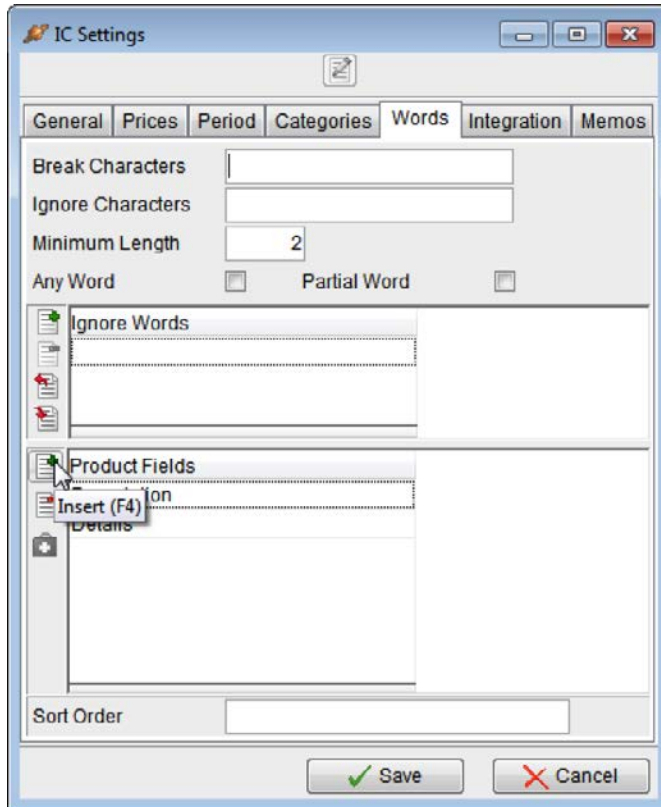
First you need to add Bin Location to your Product Fields for the IC Word Lookup. (If you have lots of Products, you should perform the next steps on the server for efficiency as the Master Files will be updated with the new word which can take some time).

Setup > Inventory Control > Settings > Words Tab

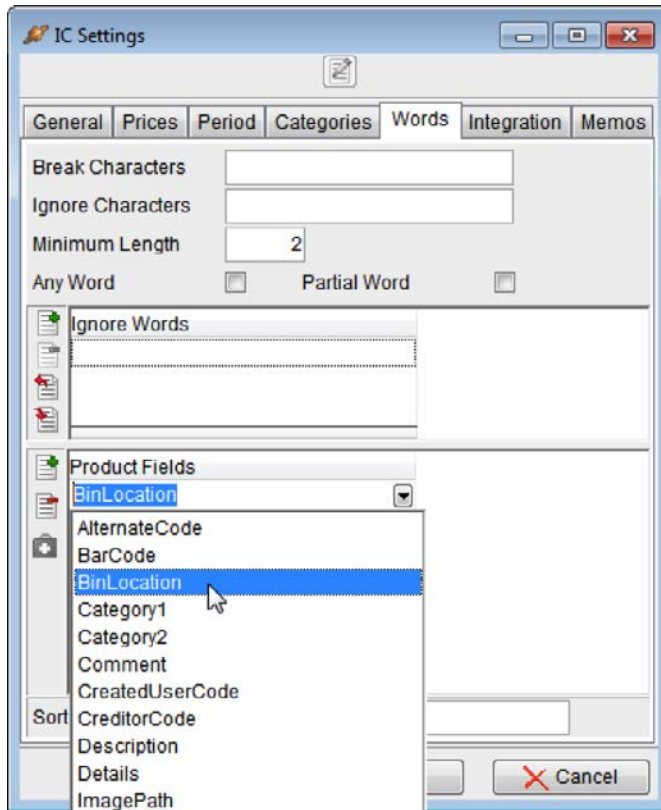
Press F11 or click Edit →



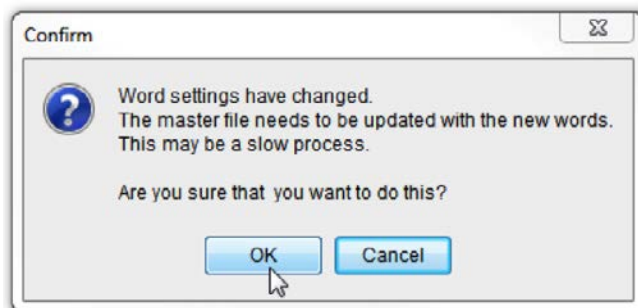
Then click Insert in the Product Fields Grid



Select BinLocation in the Product Fields Lookup.

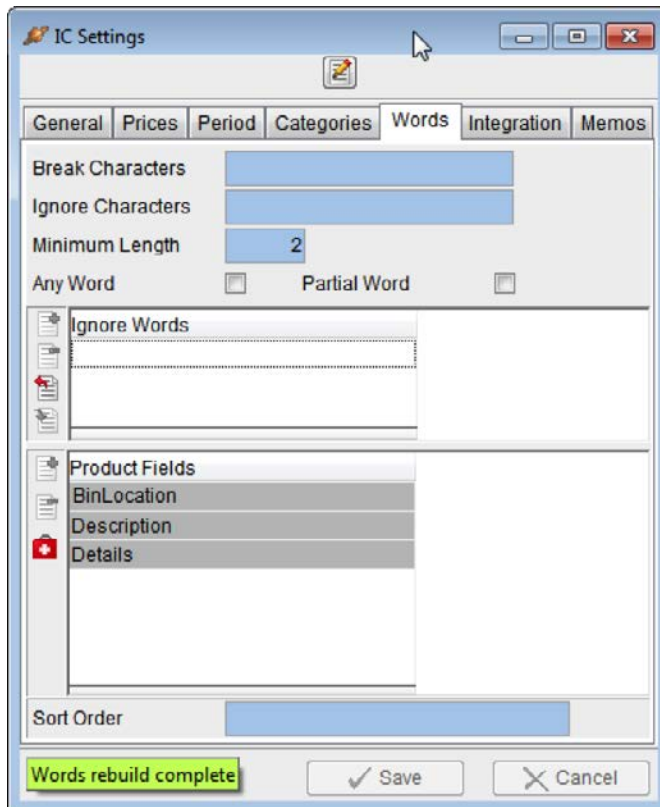


Press Save. The confirm message will appear advising the Master File needs to be updated.



Press OK.

When the rebuild has finished, you will see a status hint saying 'Words rebuild complete' as shown in the status hint below.

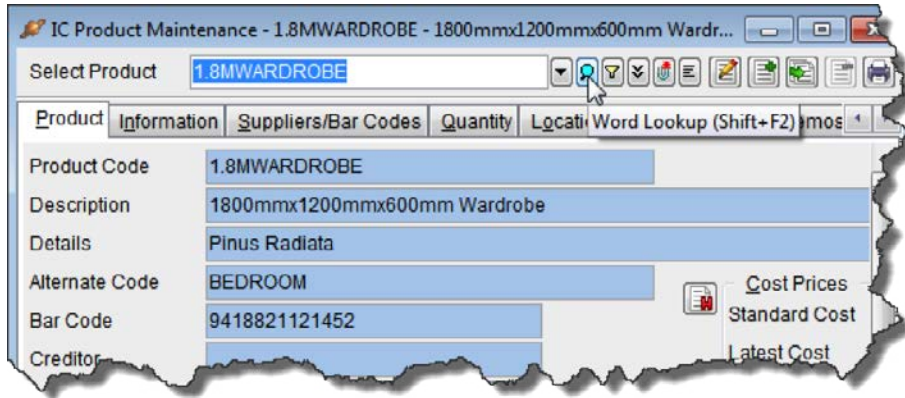


Close the Window

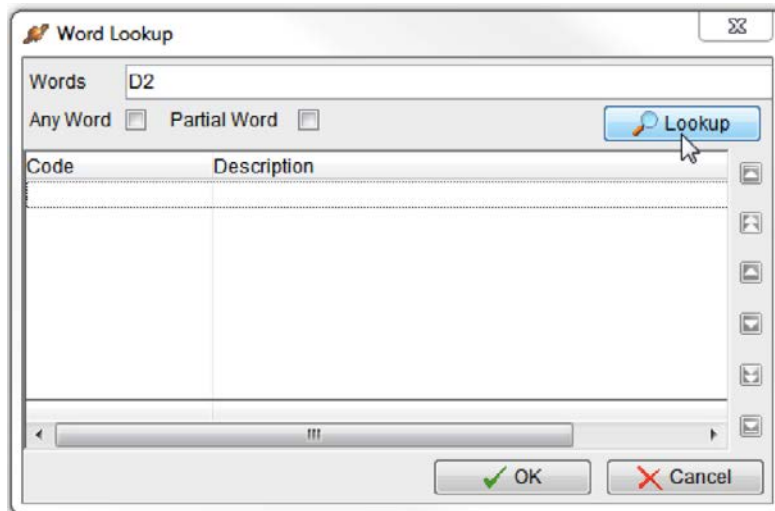
To try it out, go to:

Maintain > Inventory Control > Products

And click the Word Lookup Button (or press Shift +F2)



Enter the Bin Location you wish to search on and then press Lookup



All the Products belonging to the Bin Location will appear

